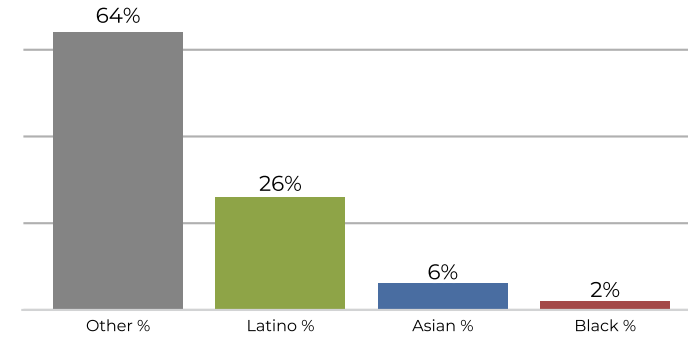
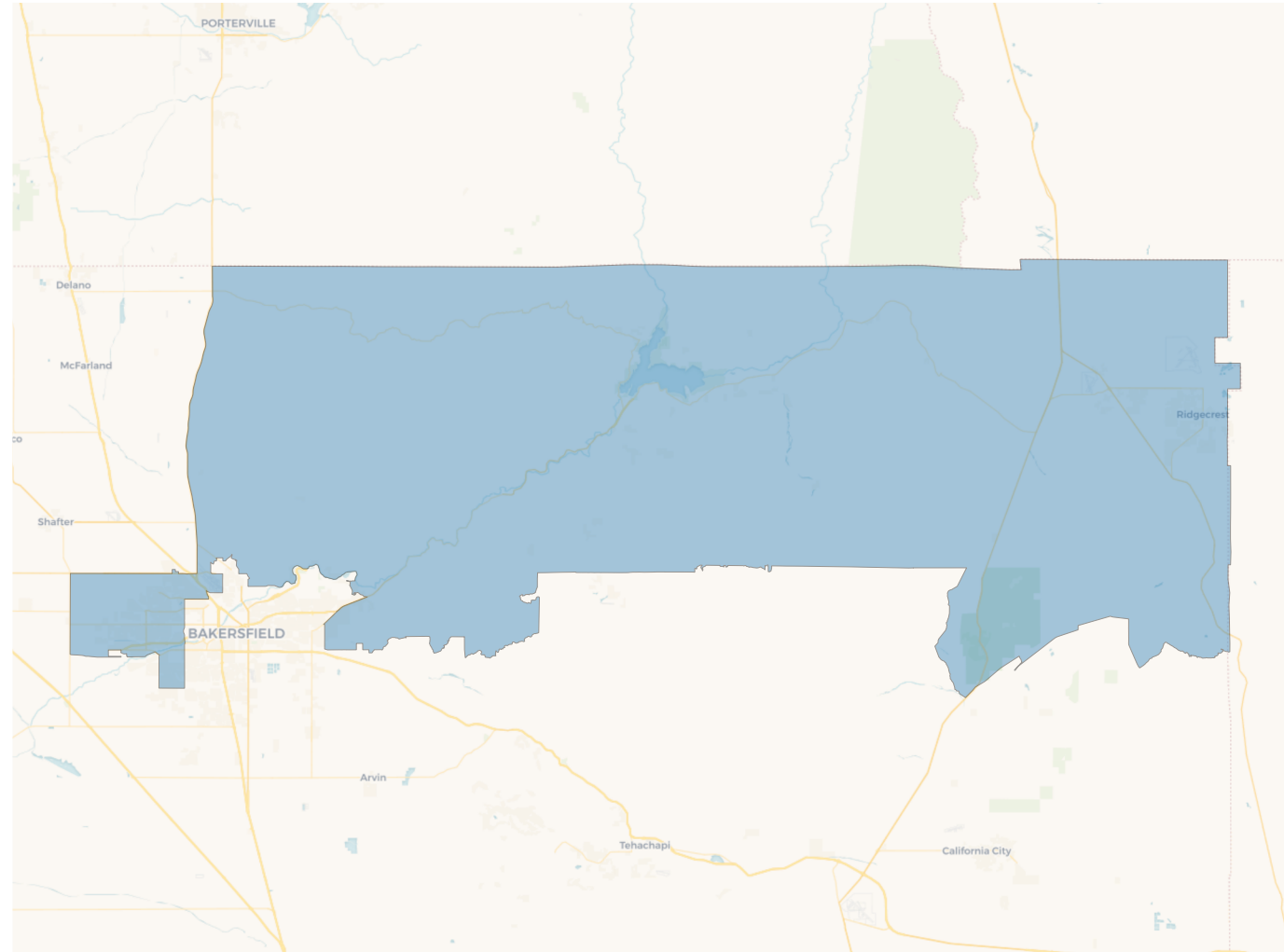
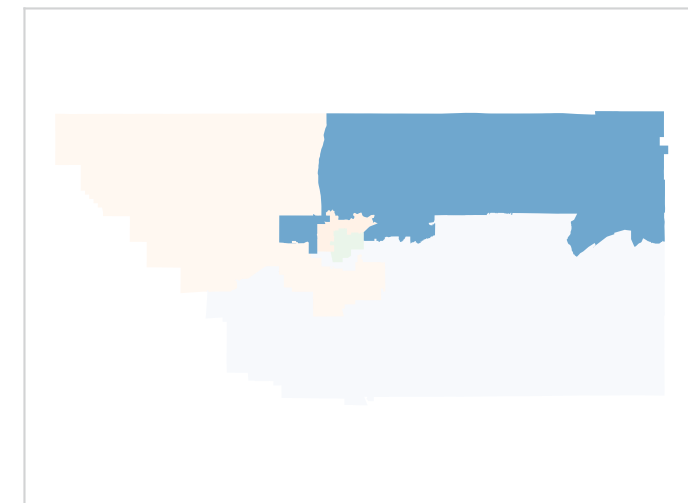
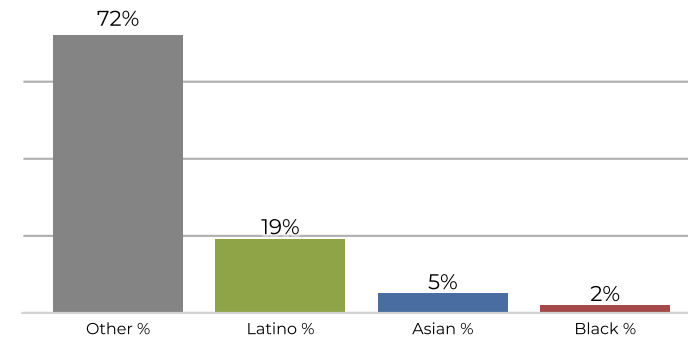


2020 Census

	1	2	3	4	5
Population	178,445	177,263	181,789	175,469	179,708
Deviation	-90	-1,272	3,254	-3,066	1,173
Deviation %	-0.1%	-0.7%	1.8%	-1.7%	0.7%
Other	115,330	77,767	78,588	21,512	23,132
Other %	64.6%	43.9%	43.2%	12.3%	12.9%
Latino	46,635	75,504	86,288	139,530	141,787
Latino %	26.1%	42.6%	47.5%	79.5%	78.9%
Asian	11,314	12,691	5,296	11,969	2,792
Asian %	6.3%	7.2%	2.9%	6.8%	1.6%
Black	5,166	11,301	11,617	2,458	11,997
Black %	2.9%	6.4%	6.4%	1.4%	6.7%

Citizen Voting Age Population (CVAP)

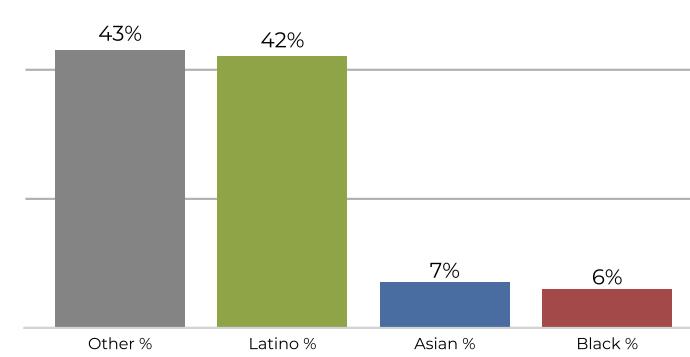
	1	2	3	4	5
Total CVAP	120,895	113,285	115,557	85,312	80,511
Other CVAP	87,043	64,972	66,646	19,176	19,537
Other CVAP %	72.0%	57.4%	57.7%	22.5%	24.3%
Latino CVAP	23,799	34,478	38,798	55,240	50,751
Latino CVAP %	19.7%	30.4%	33.6%	64.8%	63.0%
Asian CVAP	6,537	5,543	2,908	5,898	1,463
Asian CVAP %	5.4%	4.9%	2.5%	6.9%	1.8%
Black CVAP	3,515	8,292	7,205	4,998	8,760
Black CVAP %	2.9%	7.3%	6.2%	5.9%	10.9%

District 1
2020 Census

Citizen Voting Age Population


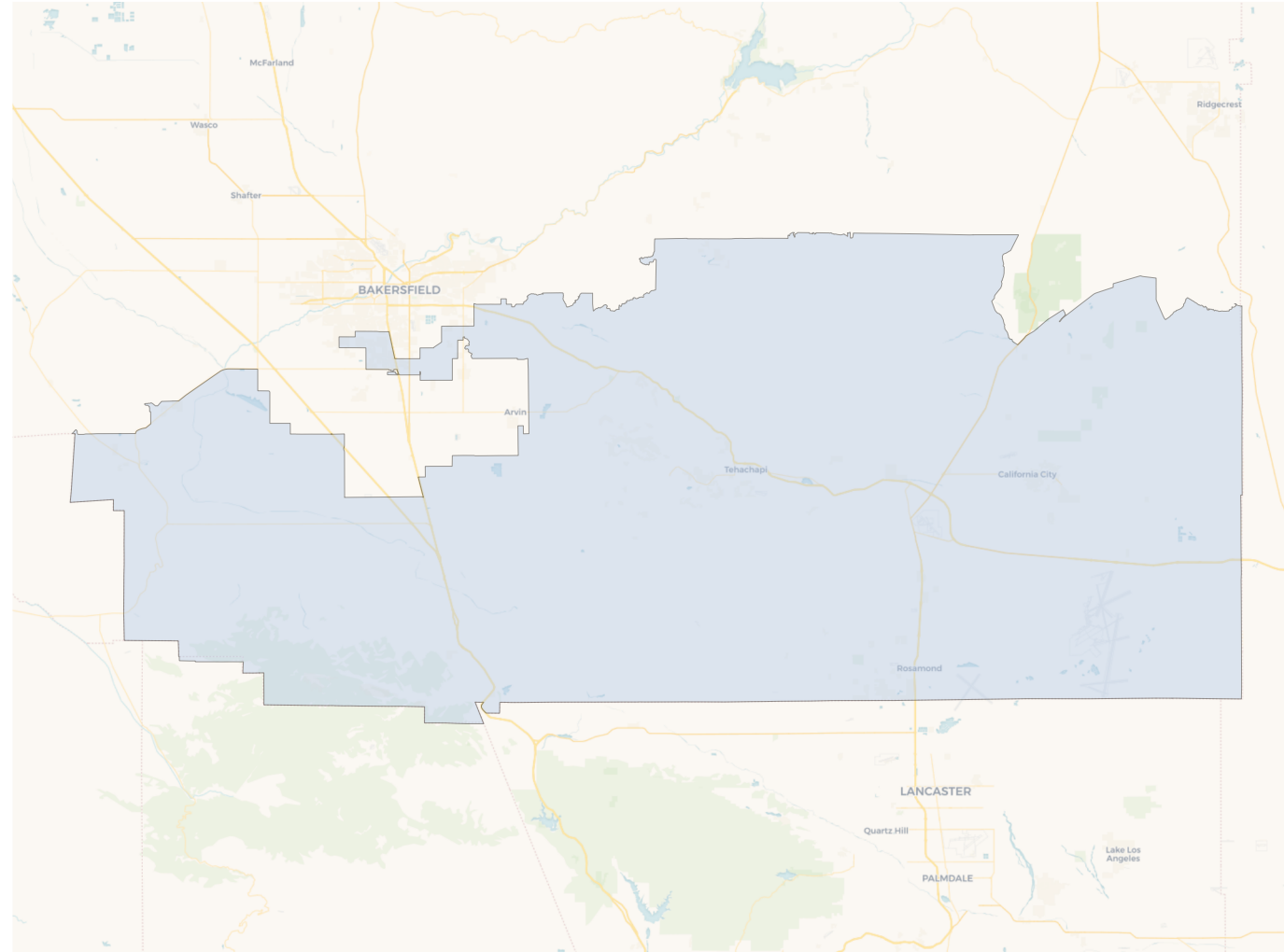
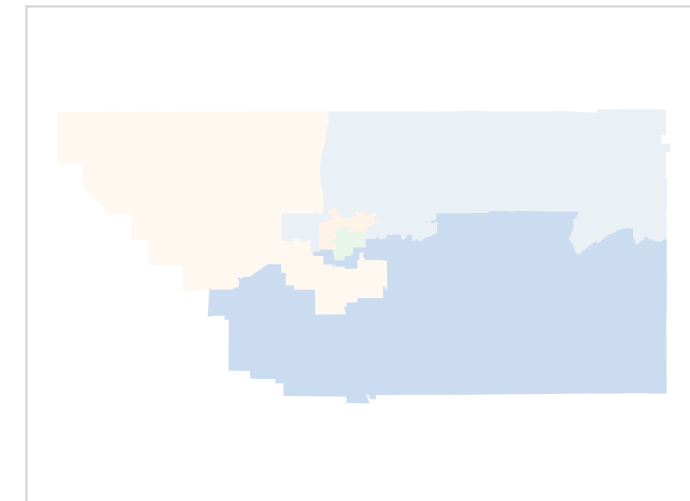
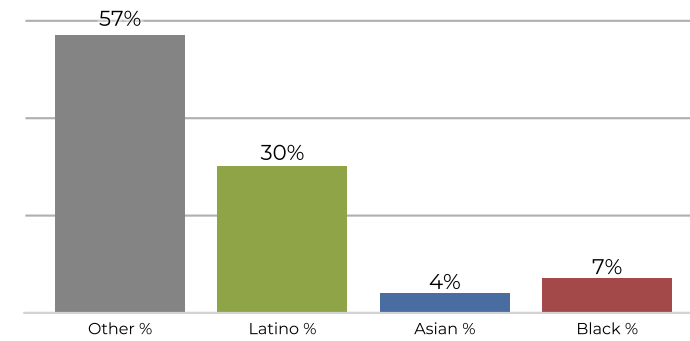
Population	Deviation	Deviation %	Other	Other %	Latino	Latino %	Asian	Asian %	Black	Black %
178,445	-90	-0.1%	115,330	64.6%	46,635	26.1%	11,314	6.3%	5,166	2.9%
Total CVAP	Other CVAP	Other CVAP %	Latino CVAP	Latino CVAP %	Asian CVAP	Asian CVAP %	Black CVAP	Black CVAP %		
120,895	87,043	72.0%	23,799	19.7%	6,537	5.4%	3,515	2.9%		

District 2

2020 Census



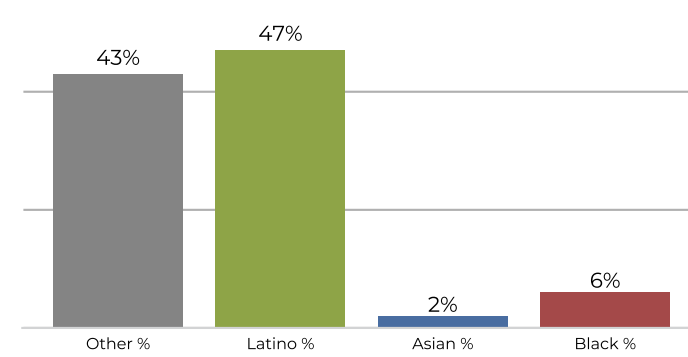
Citizen Voting Age Population



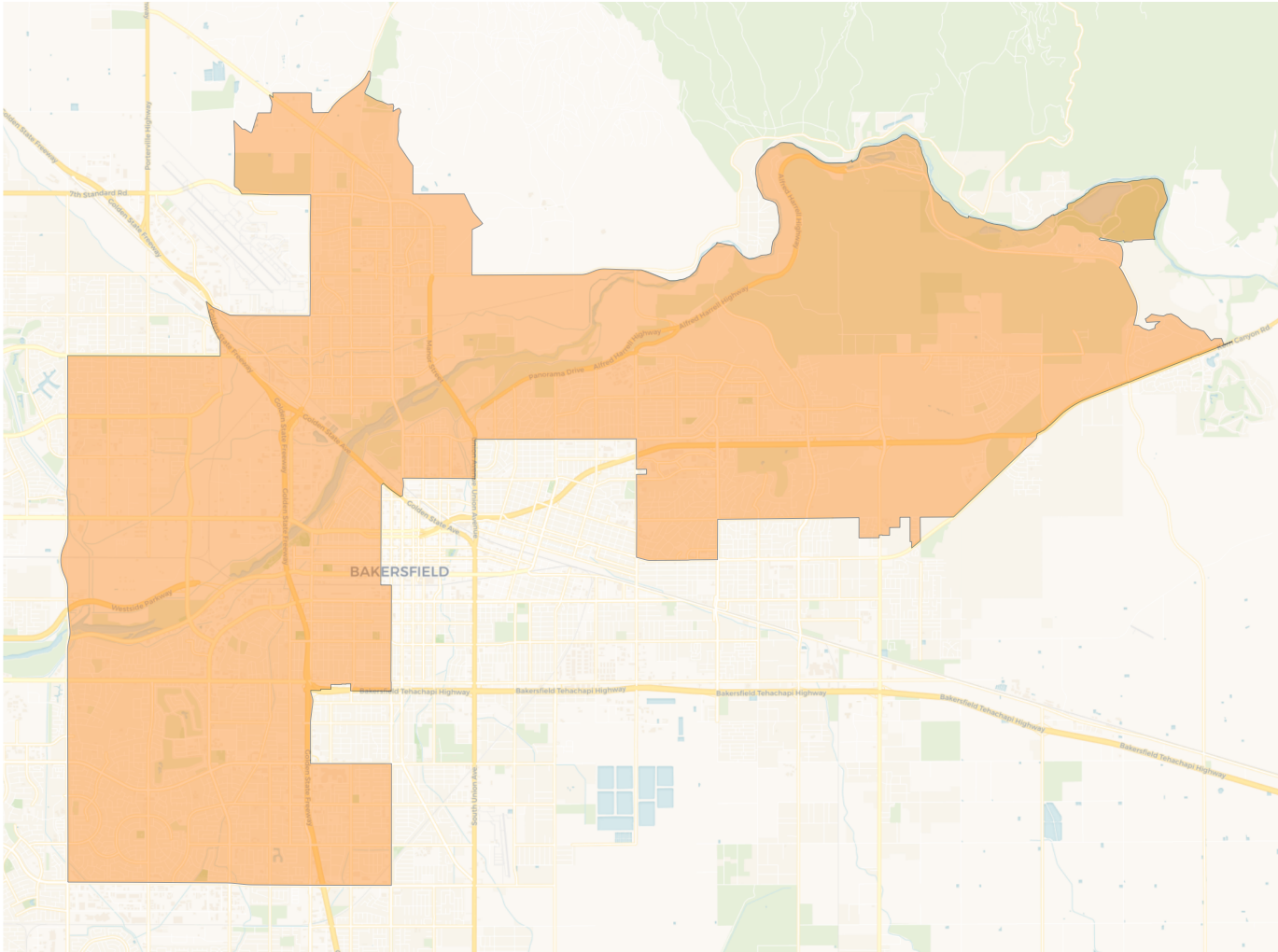
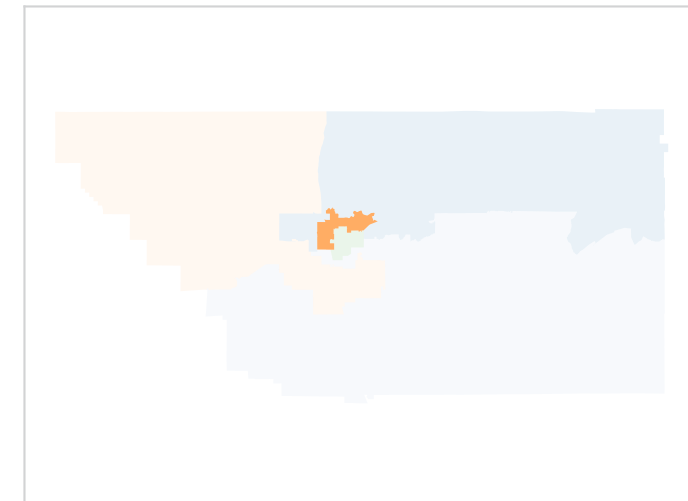
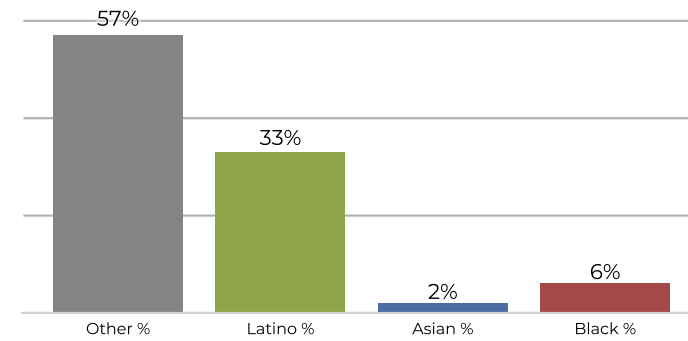
Population	Deviation	Deviation %	Other	Other %	Latino	Latino %	Asian	Asian %	Black	Black %
177,263	-1,272	-0.7%	77,767	43.9%	75,504	42.6%	12,691	7.2%	11,301	6.4%
Total CVAP	Other CVAP	Other CVAP %	Latino CVAP	Latino CVAP %	Asian CVAP	Asian CVAP %	Black CVAP	Black CVAP %		
113,285	64,972	57.4%	34,478	30.4%	5,543	4.9%	8,292	7.3%		

District 3

2020 Census



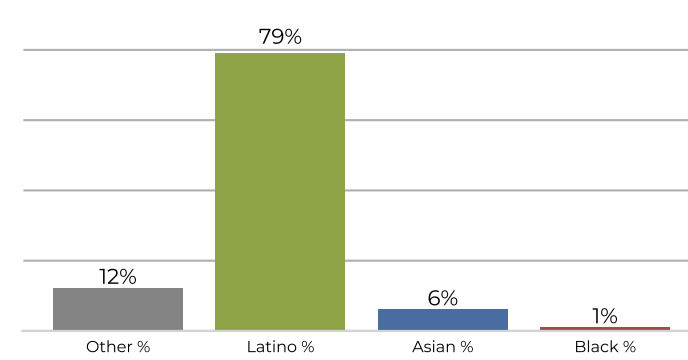
Citizen Voting Age Population



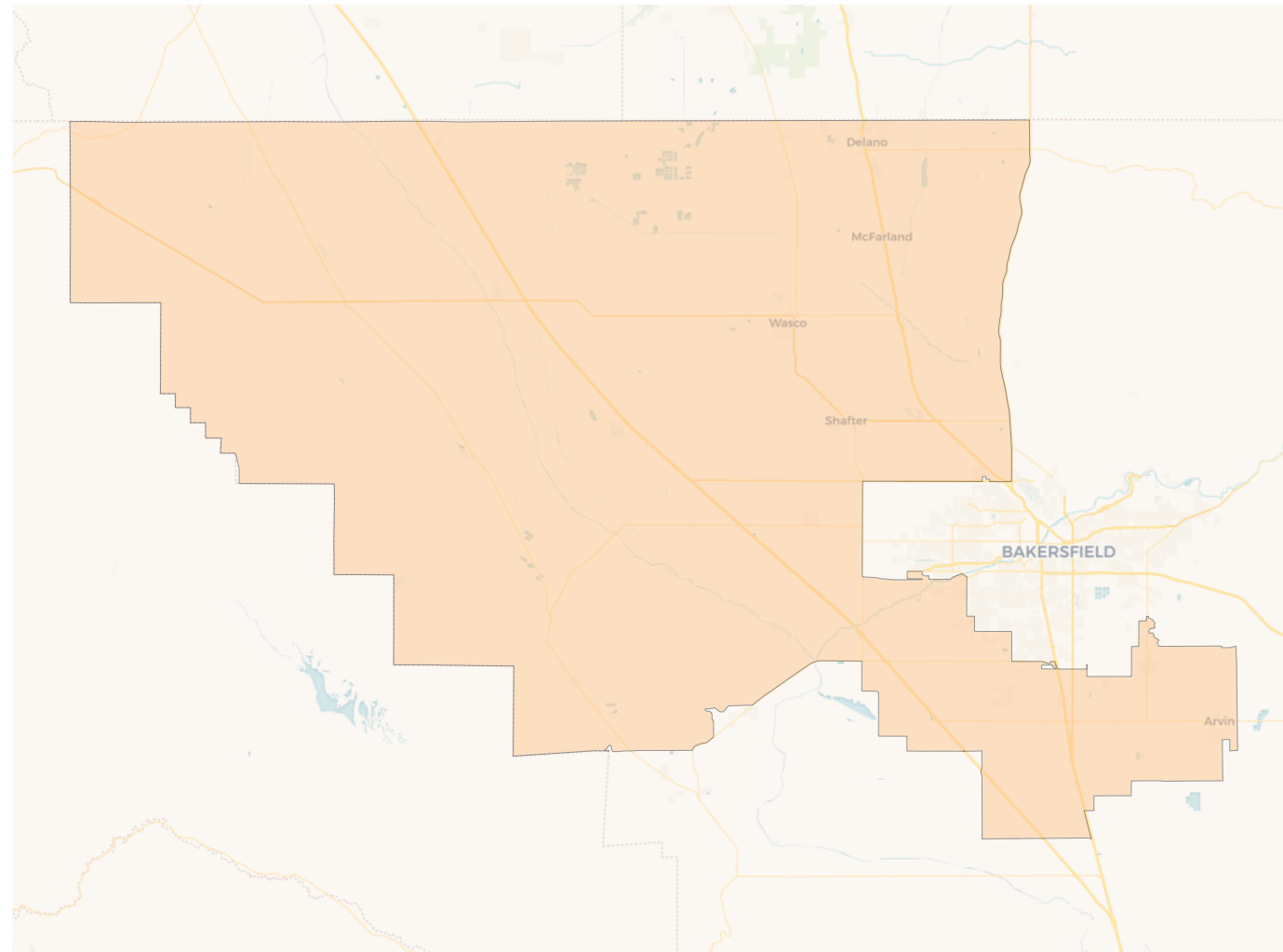
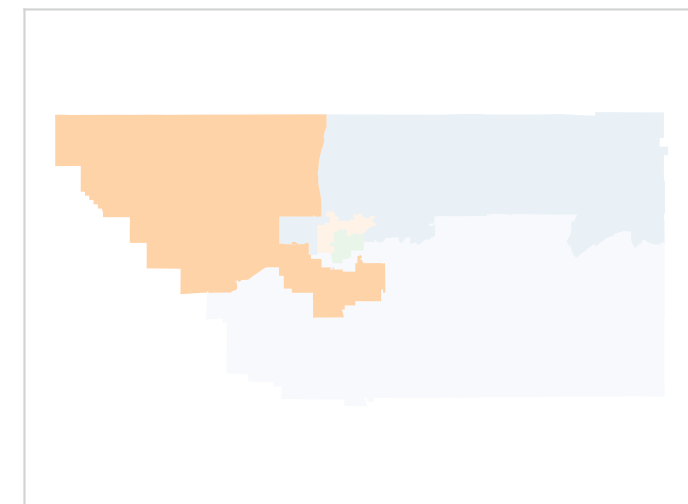
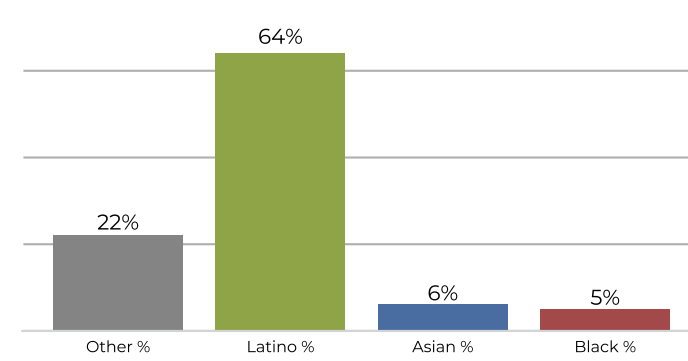
Population	Deviation	Deviation %	Other	Other %	Latino	Latino %	Asian	Asian %	Black	Black %
181,789	3,254	1.8%	78,588	43.2%	86,288	47.5%	5,296	2.9%	11,617	6.4%
Total CVAP	Other CVAP	Other CVAP %	Latino CVAP	Latino CVAP %	Asian CVAP	Asian CVAP %	Black CVAP	Black CVAP %		
115,557	66,646	57.7%	38,798	33.6%	2,908	2.5%	7,205	6.2%		

District 4

2020 Census



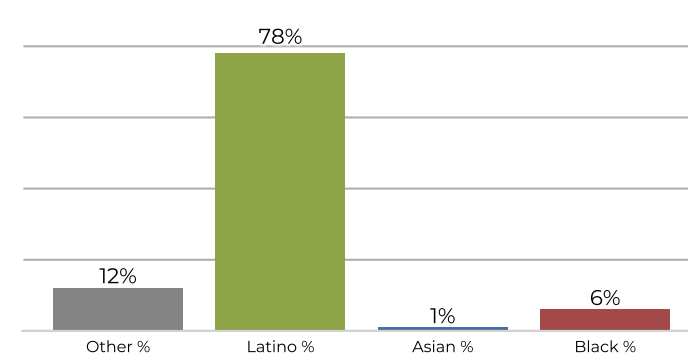
Citizen Voting Age Population



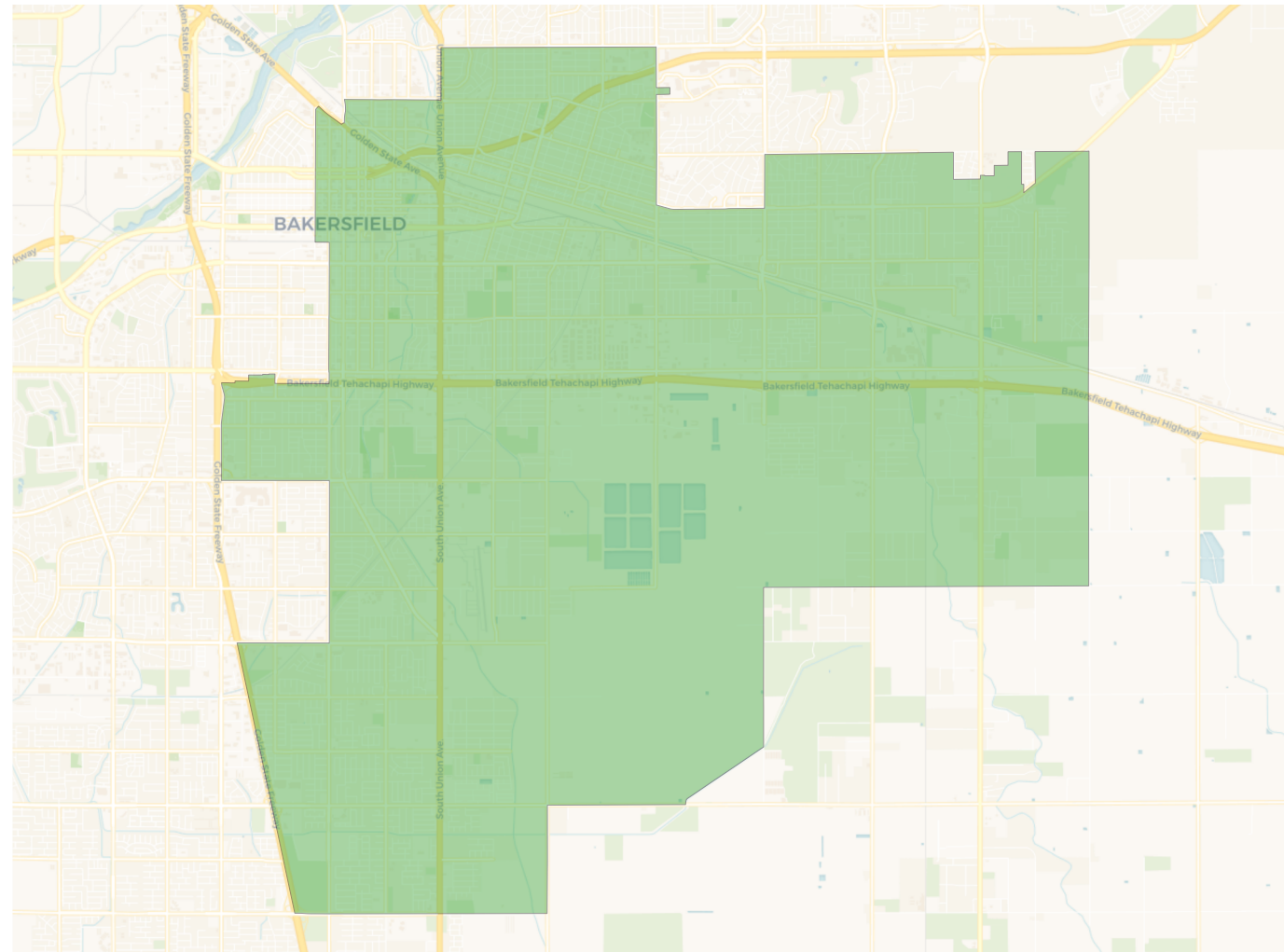
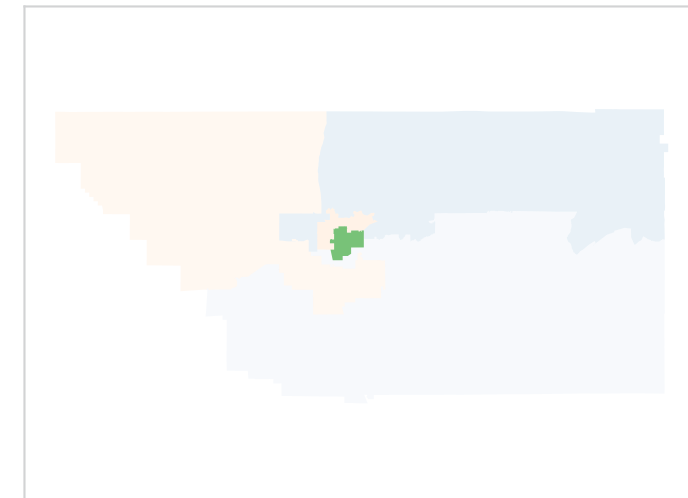
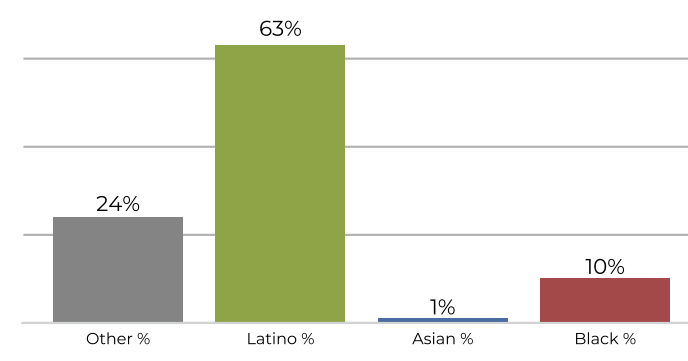
Population	Deviation	Deviation %	Other	Other %	Latino	Latino %	Asian	Asian %	Black	Black %
175,469	-3,066	-1.7%	21,512	12.3%	139,530	79.5%	11,969	6.8%	2,458	1.4%
Total CVAP	Other CVAP	Other CVAP %	Latino CVAP	Latino CVAP %	Asian CVAP	Asian CVAP %	Black CVAP	Black CVAP %		
85,312	19,176	22.5%	55,240	64.8%	5,898	6.9%	4,998	5.9%		

District 5

2020 Census



Citizen Voting Age Population



Population	Deviation	Deviation %	Other	Other %	Latino	Latino %	Asian	Asian %	Black	Black %
179,708	1,173	0.7%	23,132	12.9%	141,787	78.9%	2,792	1.6%	11,997	6.7%
Total CVAP	Other CVAP	Other CVAP %	Latino CVAP	Latino CVAP %	Asian CVAP	Asian CVAP %	Black CVAP	Black CVAP %		
80,511	19,537	24.3%	50,751	63.0%	1,463	1.8%	8,760	10.9%		